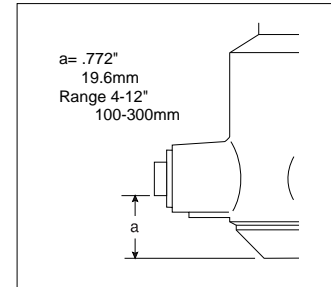
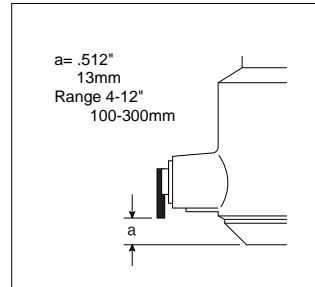
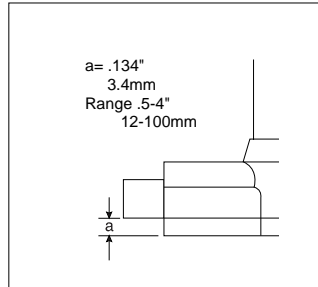
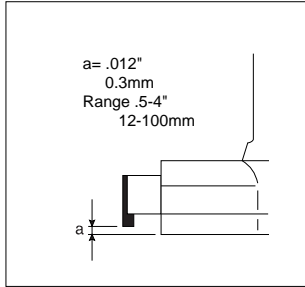


HOLTESTS

Holtests Series 368



- With Carbide Anvil
- With Standard Anvil

Specifications

Inch

Set Order No.	Range	Individual Order No.	Graduation	L1	L2	Accessories included in Set
Hardened Alloy Tool Anvil and Cone (Standard Finish)						
368-969	2.0–2.5"	368-840	.0002"	4.13"	5.94~6.46"	177-315 Setting Ring, 2.5" DIA. 177-319 Setting Ring, 3.5" DIA. 952623 Extension Rod, 5.9" 210189 Spanners (Pair) 202863 Hex. Wrench
	2.5–3.0"	368-841	.0002"	4.13"	5.94~6.46"	
	3.0–3.5"	368-842	.0002"	4.13"	5.94~6.46"	
	3.5–4.0"	368-843	.0002"	4.13"	5.94~6.46"	
With Carbide						
368-959	2.0–2.5"	368-240	.0002"	4.13"	5.94~6.46"	
	2.5–3.0"	368-241	.0002"	4.13"	5.94~6.46"	
	3.0–3.5"	368-242	.0002"	4.13"	5.94~6.46"	
	3.5–4.0"	368-243	.0002"	4.13"	5.94~6.46"	
Hardened Alloy Tool Steel Anvil and Cone (Standard Finish)						
368-985	4–5"	368-817	.0002"	6.22"	8.78~9.76"	177-299 Setting Ring, 5" Dia. 177-303 Setting Ring, 7" Dia. 952623 Extension Rod, 5.9" 205348 Spanners (Pair) 202863 Hex. Wrench
	5–6"	368-818	.0002"	6.22"	8.78~9.76"	
	6–7"	368-819	.0002"	6.22"	8.78~9.76"	
	7–8"	368-820	.0002"	6.22"	8.78~9.76"	
With Carbide						
368-925	4–5"	368-217	.0002"	6.22"	8.78~9.76"	
	5–6"	368-218	.0002"	6.22"	8.78~9.76"	
	6–7"	368-219	.0002"	6.22"	8.78~9.76"	
	7–8"	368-220	.0002"	6.22"	8.78~9.76"	
Hardened Alloy Tool Steel Anvil and Cone (Standard Finish)						
	8–9"	368-821	.0002"	6.22"	8.78~9.76"	Larger Holtests are sold individually. No set available.
	9–10"	368-822	.0002"	6.22"	8.78~9.76"	
	10–11"	368-823	.0002"	6.22"	8.78~9.76"	
	11–12"	368-824	.0002"	6.22"	8.78~9.76"	
With Carbide						
	8–9"	368-221	.0002"	6.22"	8.78~9.76"	
	9–10"	368-222	.0002"	6.22"	8.78~9.76"	
	10–11"	368-223	.0002"	6.22"	8.78~9.76"	
	11–12"	368-224	.0002"	6.22"	8.78~9.76"	

NOTE: "Holtest" Sets are not available over 8" Range.