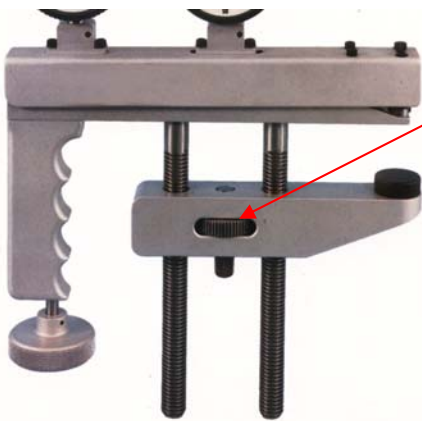


CPT User Guide



Clamp Part turning this screw

Apply minor load to SET on left dial

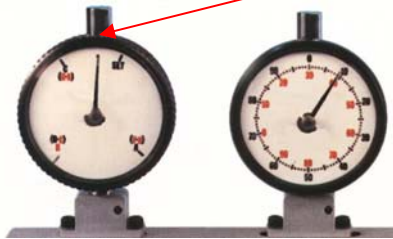
Zero right dial then continue to apply load.

Remove major load back to set on left dial

Read the hardness value on right dial
C, A & D read on black scales with B, F & G scales are read on the inside Red values

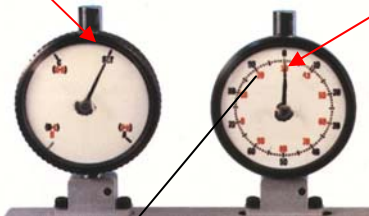


Set pointer to the dot on left dial at start with no load then start applying load



Apply minor load with knob until you reach **Set** on left dial.

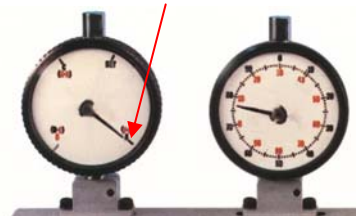
Now set the right dial to the black **0**



Apply load



Now you can apply the desired major load, **BE PRECISE!** Load for 2-3 seconds then remove major load

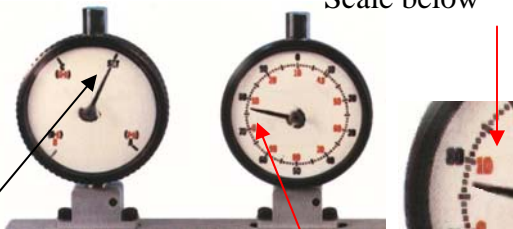


Ignore the right dial during this major load application

Example shown is 60kgf for **A** or **F**



In example shown, **F** scale reading is on Red Scale below



READ VALUE



After reading right value back out the load knob and unclamp part

Rotate the knob to remove major load back to SET